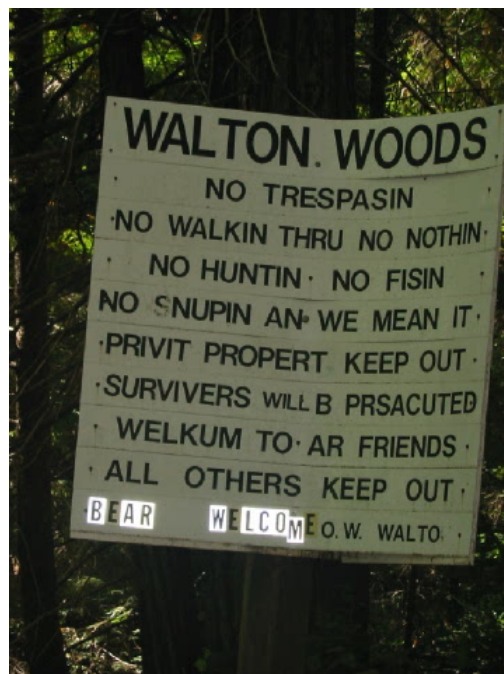
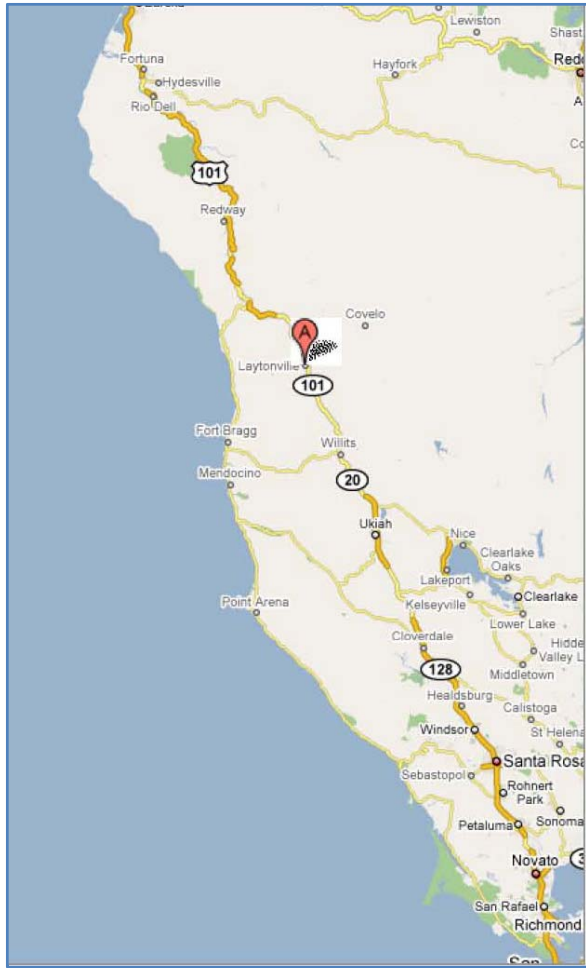
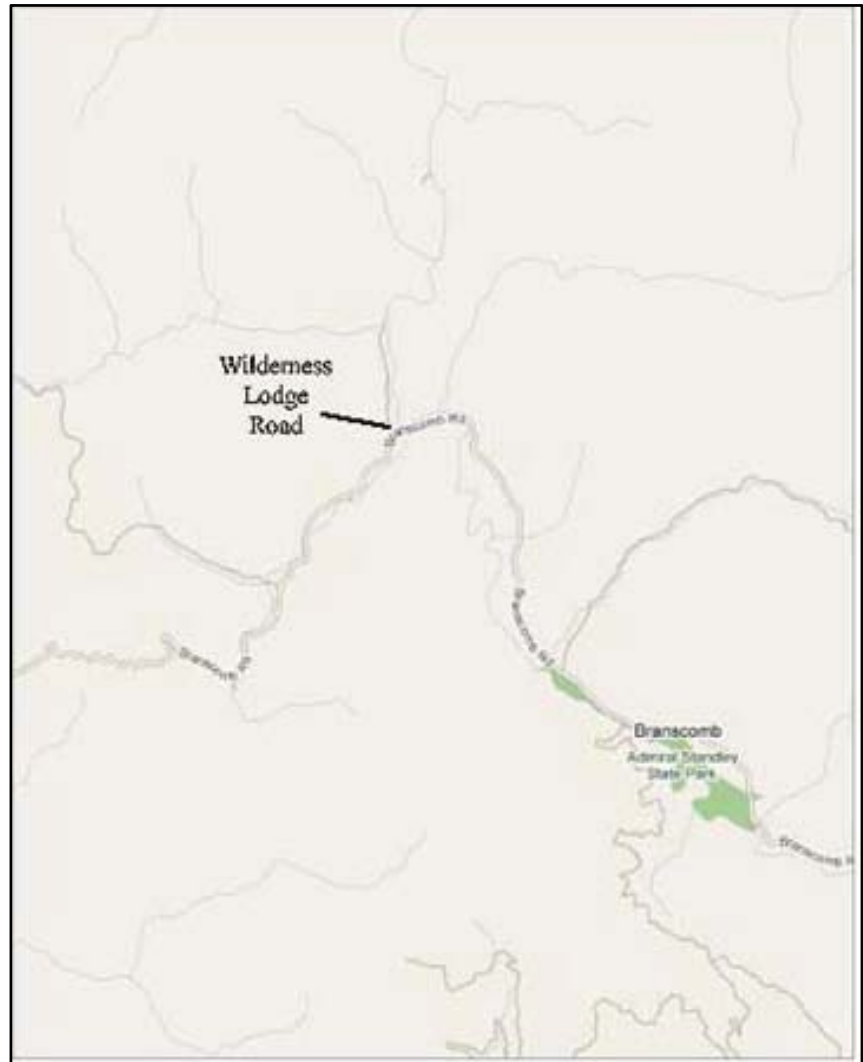
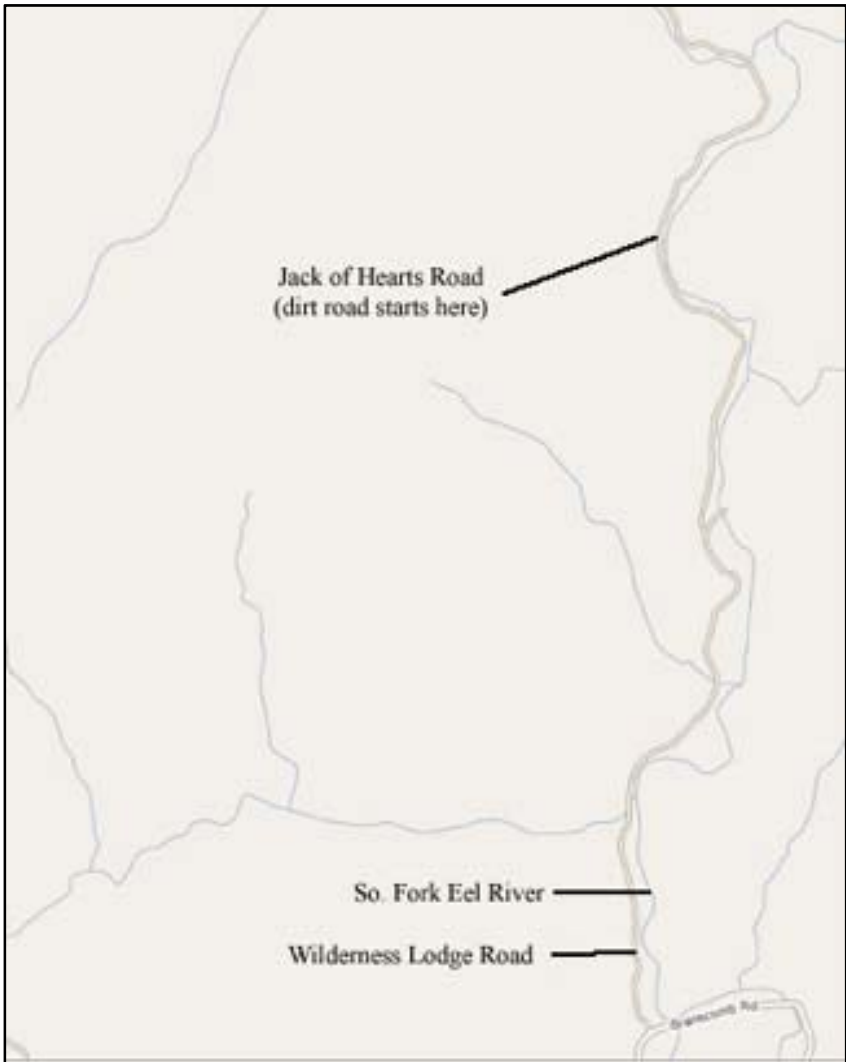


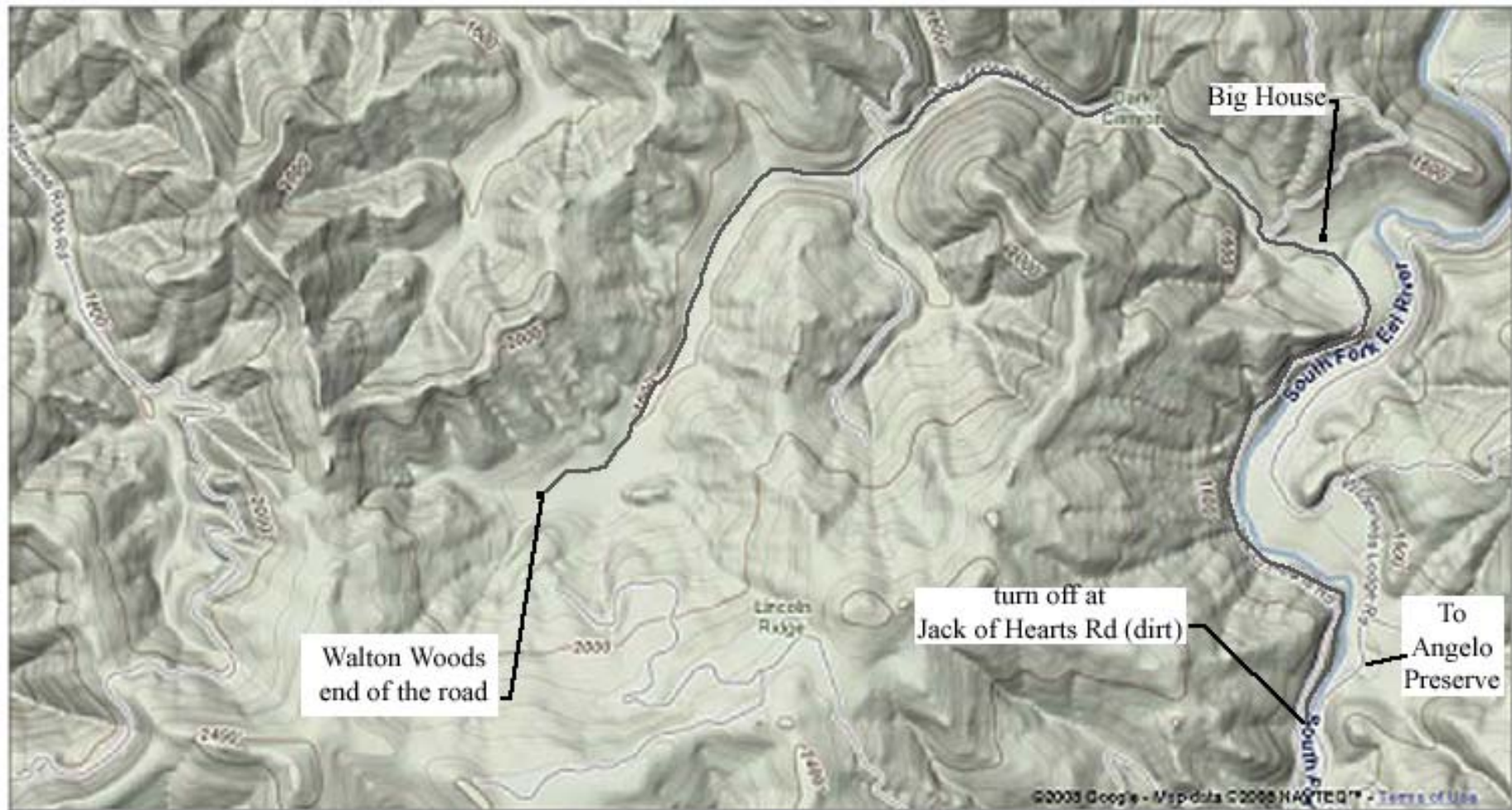
## Direction to Walton Woods Camp

1. Take 101 to Laytonville, 22 miles north of Willits.
2. At Laytonville, turn left (west) on Branscomb Road. It's 12.6 miles (22 minutes) to the town of Branscomb. There's a general store here.
3. Continue past Branscomb 3 miles to Wilderness Lodge Road. Turn right (north).
4. Follow the winding paved road 1.7 miles (N 39.70202 W123.65474). Take the fork to the left (a dirt road starts here). The paved fork to the right leads to the Angelo Preserve). Reset your trip odometer to zero.
5. For the first 1.7 miles, the S. Fork of the Eel River should be to your right. Stay right; don't follow any dirt roads coming in from the left.
6. At mile 1.7 mile (N 39.72229 W123.65238), you cross a bridge. This is Jack of Hearts Creek. From this point on, Jack of Hearts Creek should be on your left (not always visible). At mile 2.4 you cross a side channel over a new bridge.
7. At mile 2.9 you cross another side channel in a culvert; there is a little cabin just ahead on the left.
8. At mile 3.0 there is a side road to the left; stay right
9. At mile 3.1, stay left; look for a WW bird house with an arrow.
10. At mile 3.4, stay left.
11. At mile 3.8 you'll approach little Appalachia...a neighbor with junked cars and debris along the side of the road (there is a big yellow truck and Cadillac at mile 4.0). There are "no trespassing" signs and there may be barking dogs. Keep driving. Almost there.
12. At mile 4.2 (N 39.72479 W123.68101), there is a driveway leading to the left with an address sign reading "44678"; stay right.
13. Just past this the road forks; stay left.
14. At mile 4.3 is a steel gate with a big, satirical warning sign. Another 500 feet is the end of the road, and the camp (N 39.71549 W123.68691).









Walton Woods  
end of the road

turn off at  
Jack of Hearts Rd (dirt)

Big House

To  
Angelo  
Preserve

©2003 Google - Map data ©2008 NAVTEQ™ - Terms of Use